

440

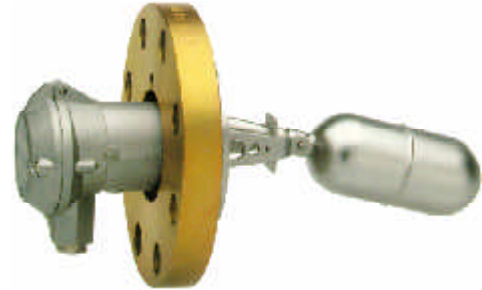
Level Switch



One float magnetic level switch for side mounting with one switching equipment. For pressure up to 25 Bar, for temperature up to 100°C and for media with a specific weight of min. 0.7 kg/dm³

Differential value for B road and A support length

B	Differential		
	A = 45	A = 95	A = 145
100	60	30	19
150	80	40	25
200	100	50	31
250	120	60	37
300	140	70	43
350	160	80	49
400	180	90	55
450	200	100	61
500	220	110	67



Floats

D	E	Applications
48	93	With all type of flanges
69	120	For UNI/DIN ND 65-80(ANSI 2 1/2" -3")only

Standard flange connection (C)

- UNI/DIN ND 50 NP10 - NP25 - ANSI 2" 150 RF - 300 RF - weight Kg 3.7
- UNI/DIN ND 65 NP10 - NP25 - ANSI 2 1/2" 150 RF - 300 RF - weight Kg 4.5
- UNI/DIN ND 80 NP10 - NP25 - ANSI 3" 150 RF - 300 RF - weight Kg 5.0

Material	AISI 304	AISI 316	PVC	Moplen	PVDF
Inner parts code (flange and float)	I	J	P	M	D

- For PVC, moplen and PVDF instruments max. working pressure 5 Bar
- For PVC, instruments max. working temperature 70°C

Switches

Micro switch 220V a.c. - 5A (M1)

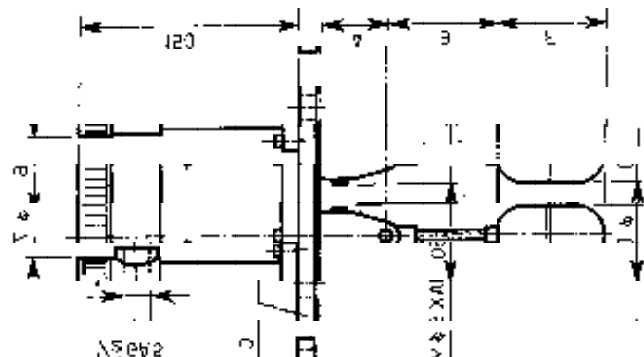
Cases

- N Standard IP 45
- WP Water-proof IP-55

How to order?

Example : 10-I-WP-100-95-2" 150 RF

- 10** Model
- I** Float and connection flange «C» material
- WP** Water-Proof housing
- 100** Road length «B»
- 95** Support length «A»
- 2" 150 RF** Type of connection flange



The following datas are required: type of media, specific weight, temperature and pressure

